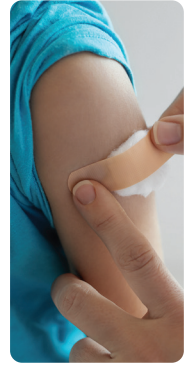


Know where to go.



Your child's health needs can require different levels of care. Use this chart for help determine whether you should go to an emergency room, visit an urgent care clinic or receive care through the AdventHealth app.

	Emergency Room	Urgent Care	Virtual Visit
Asthma	X	X	
Bleeding	X	X	
Burns	X	X	
Broken bones	X	X	
Chest pains	X		
Cuts	X	X	
Eye irritation		X	
Fever	X	X	X
Flu shot		X	
Heart palpitations	X		
Loss of vision, numbness or slurred speech	X		
Persistent cold		X	X
Persistent cough		X	X
Poisoning	X		
Seizures or convulsions	X		
Skin rash		X	X
Sore throat		X	X
Sprained muscle		X	
COVID-19 Conditions			
COVID-19 testing (<i>symptomatic or exposure</i>)		X	
COVID-19 vaccine (<i>appointment only</i>)		X	
Respiratory Problems (<i>with Positive test</i>)	X		
New confusion	X		
Inability to wake or stay awake	X		